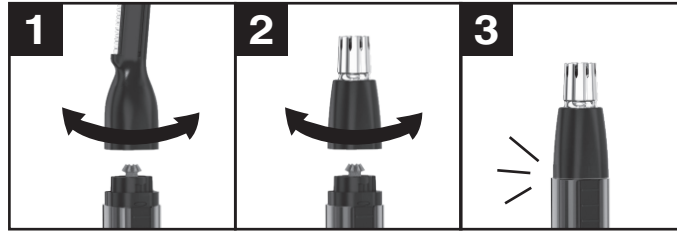
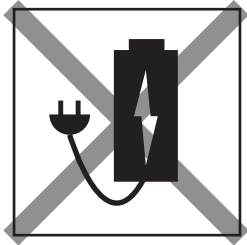
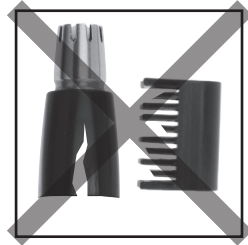


**5640 & 5662 LADIES' BATTERY  
PRODUCT GUIDE**

part no: 1003217



WAHL CLIPPER CORPORATION  
World Headquarters  
P.O. Box 578, Sterling, IL 61081

Wahl (UK) Limited  
Sterling House, Clipper Close  
Ramsgate, Kent CT12 5GG

Wahl Hungária Kft  
H-9200 Mosonmagyaróvár  
Barátság u.6.  
Hungary

Wahl International Consumer Group B.V.  
Engelenburgstraat 36  
7391 AM Twello,  
The Netherlands

Wahl Spain  
Fernando Giner de los Rios 12  
46910 Sedavi  
Valencia, Spain

Wahl France SAS  
1c rue Foch  
67450 Mundolsheim  
France

WAHL Italia s.r.l.  
Via Gobetti 52 - 1° piano  
I-40129 Bologna (BO)  
Italia

Представительство в РФ и РБ:  
ООО УОЛЛ Рус  
Ракетный бульвар, д. 16  
129164 Москва / Russia (Россия)

Wahl India Grooming Products Pvt Ltd.  
B-1002, 10TH Floor, B-Wing, Lotus Corporate Park,  
Off Jay Coach Flyover,  
Western Express Highway,  
Goregaon-East, Mumbai 400-063

Wahl Japan  
K Building 8F  
1-32-11 Yoyogi,  
Shibuya-Ku, Tokyo 151-0053, Japan

Wahl Australia PTY LTD  
PO Box 456  
Acacia Ridge QLD 4110,  
Australia

Wahl NZ Limited  
PO Box 38 323  
Wellington Mail Centre  
Lower Hutt 5045, New Zealand

Wahl Clipper Brasil  
Rodovia Geraldo Scavone,  
2300 UC 45. Pedregulho,  
Jacarei - SP. CEP: 12305-490

Wahl Argentina  
Av. Alvarez Jonte 5655  
Buenos Aires (C1407GPK), Argentina

WAHL MEA FZCO  
Dubai Airport Free Zone  
P.O Box 371395, Dubai UAE

Wahl Clipper (Pty) Ltd  
PO Box 2916 Bedfordview,  
Gauteng 2007 South Africa



© 2020  
Wahl® is a registered trademark  
of Wahl Clipper Corporation  
Revision 6/20 V1  
[www.wahl-consumer.com](http://www.wahl-consumer.com)